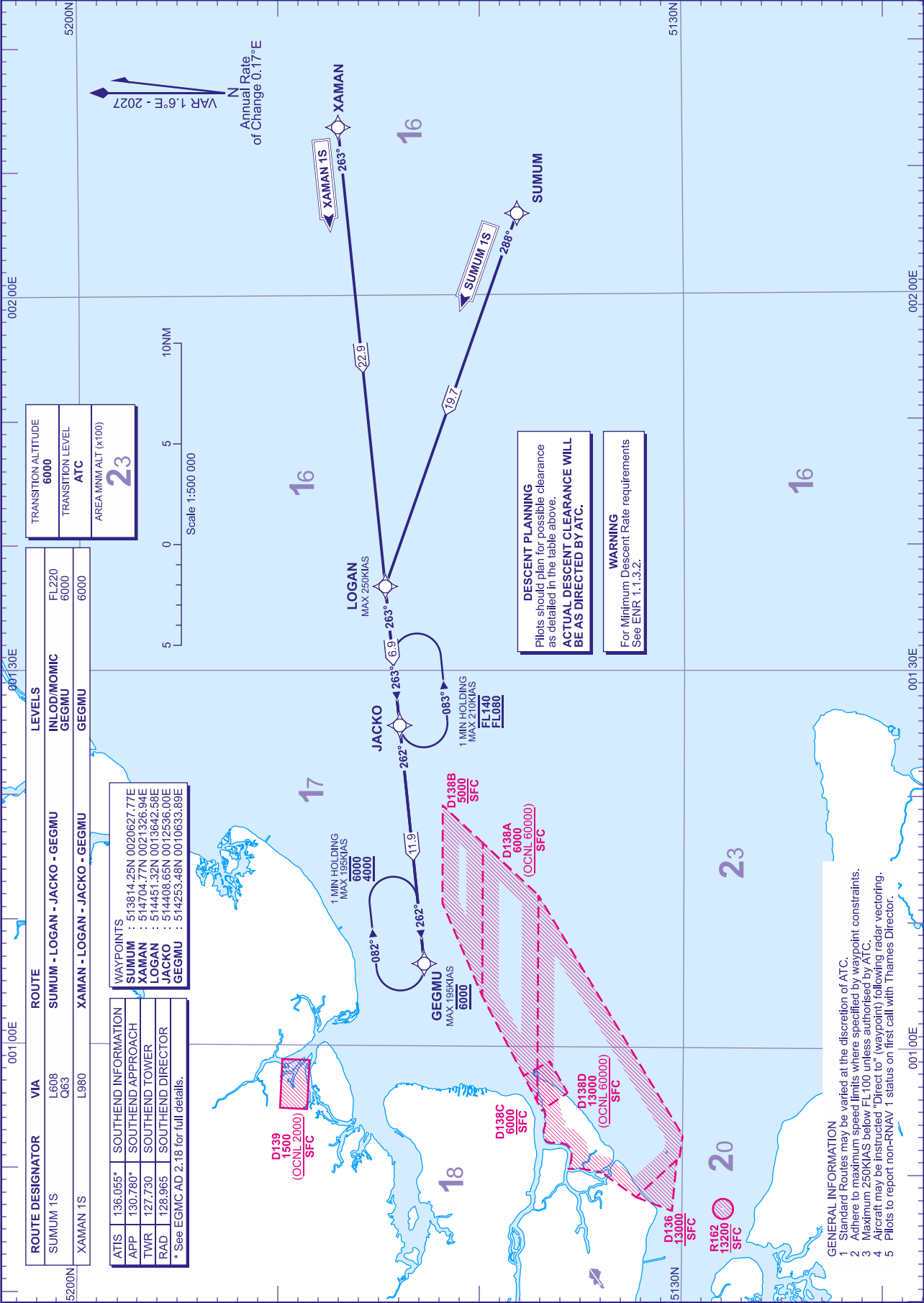


RNAV5 (VOR/DME, DME/DME or GNSS)  
STANDARD ARRIVAL CHART -  
INSTRUMENT (STAR) - ICAO

DISTANCES IN NAUTICAL MILES  
TRACKS ARE MAGNETIC  
ALTITUDES AND ELEVATIONS ARE IN FEET

SOUTHEAST  
RWY 05/23  
SUMUM 1S XAMAN 1S



CHANGE (2/26): MAG INFO REVISED. MAG HEADINGS. RESTRICTED AREA EGR162 ADDED.

AERO INFO DATE 03 DEC 25

- GENERAL INFORMATION**
- Standard Routes may be varied at the discretion of ATC.
  - Adhere to maximum speed limits where specified by waypoint constraints.
  - Maximum 250KIAS below FL100 unless authorised by ATC.
  - Aircraft may be instructed "Direct to" (waypoint) following radar vectoring.
  - Pilots to report non-RNAV 1 status on first call with Thames Director.

AD 2-EGMC-7-1